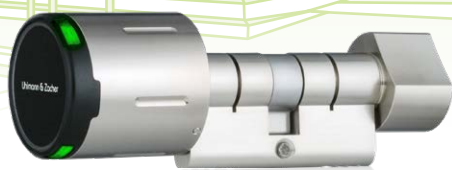


Uhlmann & Zacher

CLEX PRIME

UZ



***Electronic locking and
security management***



UZ

Clear, flexible and secure

The **Clex prime** locking system is an electronic locking system to secure various types of buildings. It meets all security requirements for office, industrial and administration buildings as well as public buildings like hospitals, universities or airports. Even the more complex requirements for hotels and recreational facilities can be met using specific system properties.

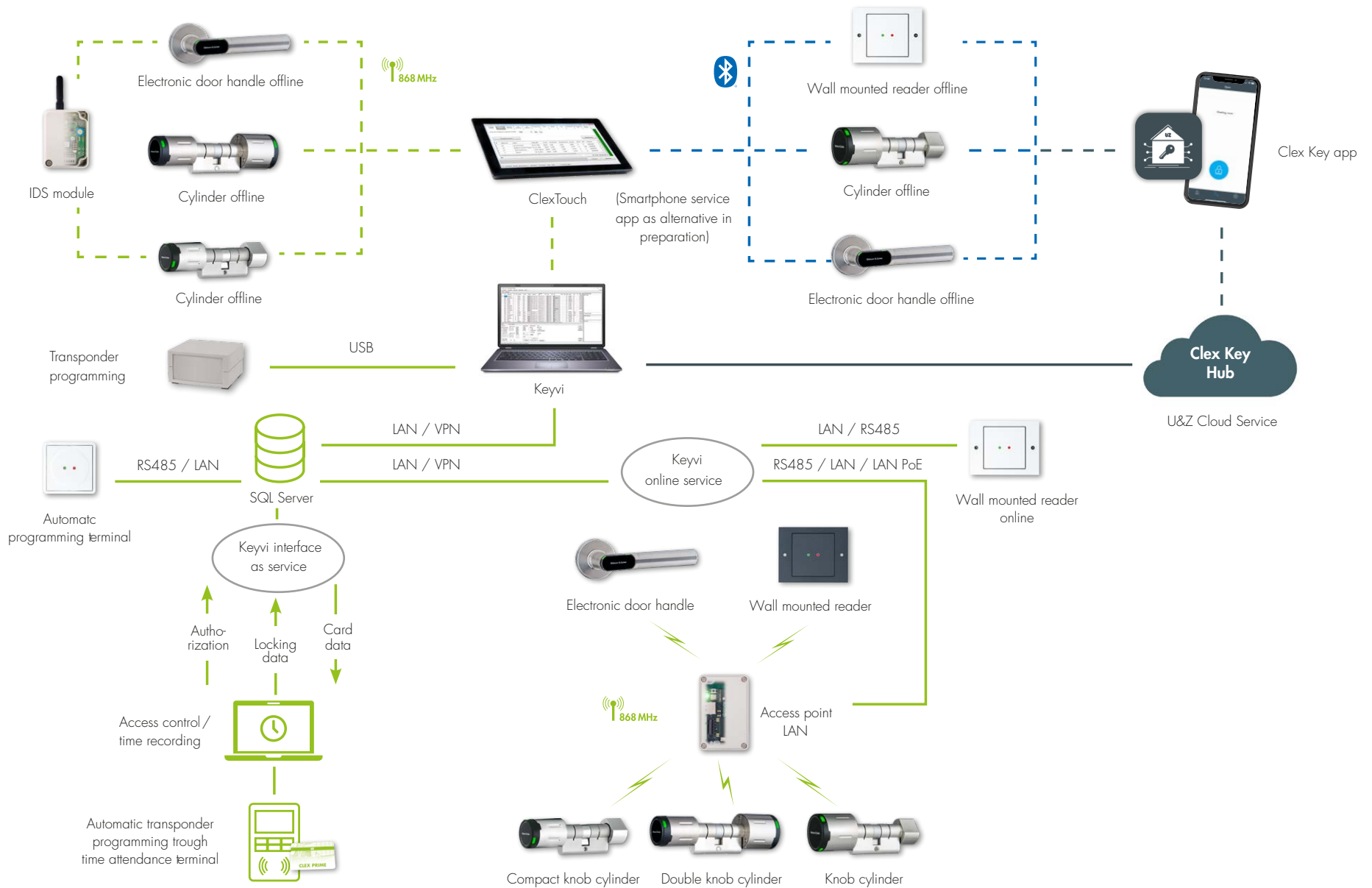
Mechanical locking systems quickly reach their operating limits since lost keys pose a major security risk. The mechanical locking system is replaced by a system that is easy to manage and secure. With its two expansion stages, locking systems with **up to 60,000 keys** can be installed; **Up to 60,000 cylinders** can be used in one locking system.

With the new **Clex prime mobile** users can now open and close their electronic locking units with the **Smartphone**. In the process the smartphone communicates with the locking units via **Bluetooth® Low Energy**. Alternatively, opening and closing is also possible using RFID transponder.

System overview

CLEX PRIME

U&Z



868 MHz Radio Connection

Bluetooth® Low Energy

Cable connection (LAN, RS485, USB etc.)

Offline (wireless)

Online (wireless)

Your authorised dealer will be glad to assist you:

Subject to changes and errors. Product images might differ from the original product.

UZ

Examples from our product range:

2022-10-EN



CX6122

Double-knob cylinder with electronic authorisation on one side, as CX6124 also available with electronic authorisation on both sides.



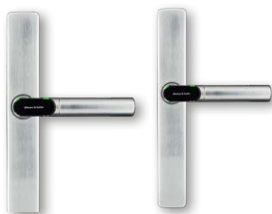
CX6162

Compact electronic knob cylinder with electronic access right on one side



CX6172

Electronic door handle with electronic authorisation on one side



CX6174

Electronic door fitting with electronic authorisation on one side



CX6132

Wall mounted reader for switching potential-free contacts