

CX2530

Clex private
Keyng1



Operating manual

Imprint

Operating and assembly manual

Keyng1 CX2530

Document number: 0B7C

Version: 1.02

Status: 12.03.2021

Manufacturer

Uhlmann & Zacher GmbH

Gutenbergstr. 2-4

97297 Waldbuettelbrunn

Germany

Tel.: +49 931 40672-0

E-Mail: contact@UundZ.de

<http://www.UundZ.com>

This operating and assembly manual is copyright protected. The information contained this manual should not be reproduced, distributed or used for competitive purposes or shared with third parties. It is likewise forbidden to manufacture any component using this manual without prior written consent.

Table of contents

1	About this document	3
1.1	Symbols	3
2	Using Keyng1 for the first time	4
2.1	Installing Keyng1 management software	4
2.2	Starting Keyng1 for the first time	5
2.3	Licensing the Keyng1 management software	5
3	"Settings" menu.....	6
3.1	"Language" tab	6
3.2	"Mode" tab	6
3.3	"Wireless stick/programming station" tab.....	6
3.4	"Database" tab	7
3.5	"License" tab	7
4	Basics	8
4.1	Functionality.....	8
4.2	Initial commissioning	8
4.3	Existing system.....	11
5	Extension.....	12
5.1	Extension	12
6	Management	14
6.1	Changing access rights	14
6.2	Locks	15
6.3	Key.....	15
6.4	Lost/found key.....	15
6.5	Events.....	15
6.6	Holidays / weekly schedules (only in expert mode)	16
7	Log.....	17
8	"Service" menu	18
8.1	"Service-opening" tab	18
8.2	"Time" tab	18
8.3	"Event log" tab	18
8.4	"Locking time" tab	18
8.5	"WoR mode" tab	19
8.6	"Wake-up Sens." tab	19
8.7	"FW Update" tab.....	20

1 About this document

This operating manual describes the Keyng1 management software (in short: CX2530). It is part of the product and contains important information that is necessary for proper operation.

This operating manual is intended for end customers.

- ▶ Read this operating manual carefully for smooth and safe operation and follow the instructions given in it before using the software.
- ▶ Please retain the operating manual for future reference.

Uhlmann & Zacher GmbH does not assume any responsibility for disruptions or hazards such as non-access to injured personnel, malfunctions, property damage or other damages resulting from non-compliance with this operating and assembly manual or incorrectly configured door handles.

- ▶ If there are still any doubts after reading this operating and assembly manual, please contact your respective dealer or Uhlmann & Zacher GmbH directly.

1.1 Symbols

The following symbols may be used in this manual:

- ▶ This symbol indicates a usage instruction that must be followed by the user.
- This symbol indicates an entry in a list.



This symbol indicates useful and important information.

2 Using Keyng1 for the first time

2.1 Installing Keyng1 management software



Carry out the installation as a local administrator or with local administrator rights.

Execute the "setup.exe" file of the Keyng1 software.

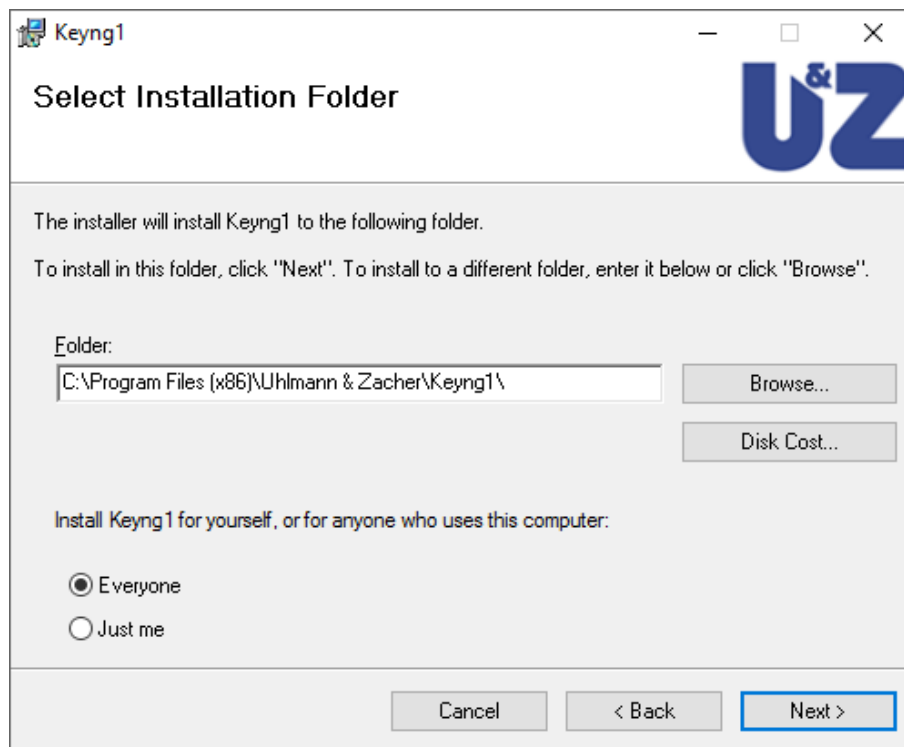


Figure 1: Entering the installation path entry and starting the installation

- ▶ The installation starts once the "Next >" button is pressed.
- ▶ Follow the instructions of the installation program until the installation process is completed.

2.2 Starting Keyng1 for the first time

Once the Keyng1 management software is installed successfully, the program shortcut "Keyng1" is available in the start menu.

- ▶ Start the Keyng1 management software by left clicking on the shortcut.
- ▶ A default database is created during installation. This can be changed on request under "Settings / database"...

2.3 Licensing the Keyng1 management software

Licensing is necessary for operating the system for the first time, it controls the access to the external peripheral devices.

Activate Keyng1

Licence Data

Company: Musterfima

Salutation: Herr Title:

Lastname *: Mustermann

Firstname:

Street *: Musterstraße 17

Address Info:

Postcode *: 12345 Country *: D

City *: Musterstadt

E-Mail *: mustermann@mustermail.net

Licenced radio stick

SN: 000777E5

SN2:

Subscribe to newsletter (may be cancelled in each newsletter)

I accept the [usage terms](#) of the Keyng1 software *

* Mandatory input

Change Activate Close

Figure 2: Enabling Keyng1

- ▶ Connect the supplied USB wireless stick.
- ▶ Click on "Search for wireless stick". Its serial number is displayed in the "SN" field once it is found.
- ▶ Fill out the license details.
- ▶ Complete licensing by clicking on "Enable".

3 "Settings" menu

3.1 "Language" tab

Select the desired application language.

3.2 "Mode" tab

Here, the expert mode can be enabled where additional configuration options, such as weekly schedules and holidays, are available.

You can also disable online help here.

3.3 "Wireless stick/programming station" tab

3.3.1 Com port

Using the "Update" button, you can search for existing devices. Selecting the appropriate COM port defines which device has to be used to communicate with the locking units.

3.3.2 Number of connection attempts

This setting defines how often the Keyng1 management software attempts to connect with a locking unit, for example with an electronic door lock. Default setting is 10 connection attempts.

The lowest setting is 3, the highest is 50.

3.3.3 Number of key reading attempts

This setting defines how often the system attempts to read a key that is held in front of a locking unit, that is, in front of an electronic door lock. Default setting is 10 reading attempts.

The lowest setting is 3, the highest is 50.

3.3.4 Fl.

If the check box "Fl." is enabled, the connection indicator starts flashing.



3.3.5 Delay (ms)

This setting defines the time delay between attempts to connect with the locking unit.

The default setting is 500 ms.

The lowest possible setting is 100 ms, the highest is 5000 ms.

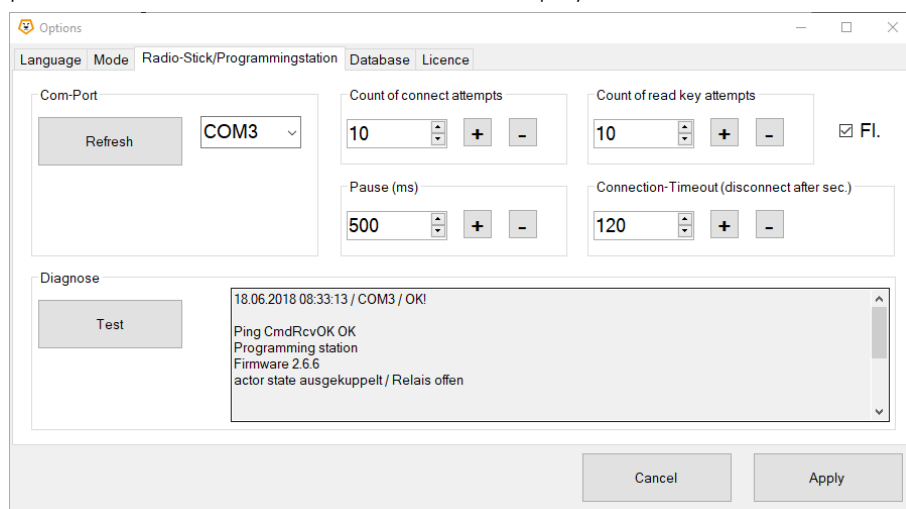
3.3.6 Connection timeout (disconnect after sec.)

This setting defines the time after which the connection to a locking unit is automatically disconnected if the connection is not terminated manually. The default setting is 120 seconds.

The lowest possible setting is 0 seconds, the highest is 999 seconds.

3.3.7 Diagnosis

The "Test" button is used to try to communicate with the component connected to the selected COM port. If the wireless stick is connected to the selected COM port, then details about the wireless stick are displayed.



3.4 "Database" tab

The database path for the Keyng1 management software is defined here. A different path can be defined by pressing the "Database path" button.

- A new database can be created by entering a new database name and pressing the "Create database" button.
- The active database is changed by pressing the "Select database" button and then selecting the desired database.
- The active database is deleted by pressing the button "Delete database" and subsequent confirmation prompt to prevent accidental deletion.

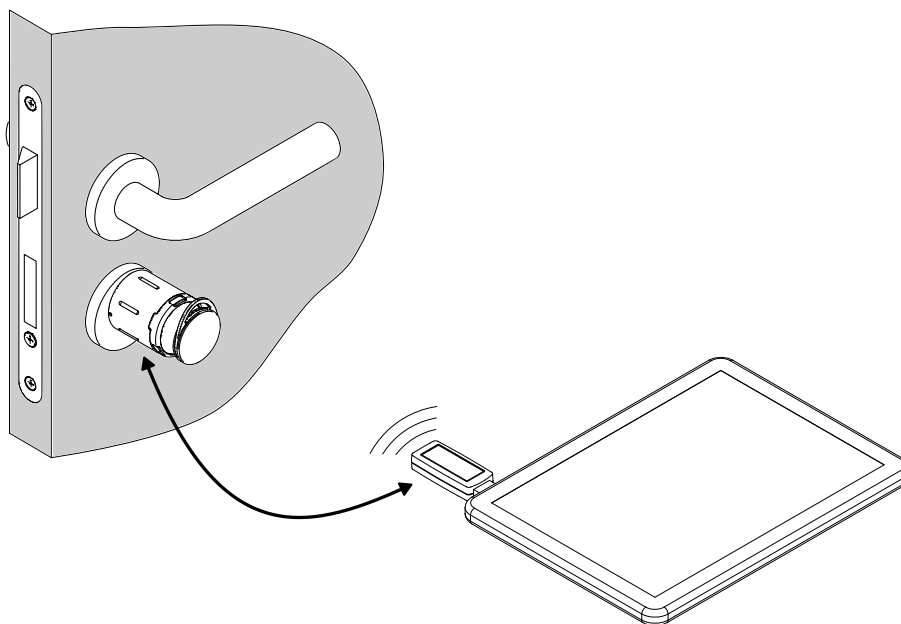
3.5 "License" tab

Licensing is necessary for operating the system for the first time, it controls the access to the external peripheral devices.

The license details can be changed by pressing the "License" button.

4 Basics

4.1 Functionality



- The Keyng1 management software can communicate directly with the locking units using the USB wireless stick for authorisations and settings. For this purpose, the respective locking unit has to be in programming mode.
- To get information about the key being used, the Keyng1 management software uses the locking unit as a reader. The locking unit has to be in programming mode, then a key is held in front of the locking unit, whose information is sent to the Keyng1 management software by the locking unit.

4.2 Initial commissioning

The initial commissioning is divided into 12 steps after which the system is ready for use. The necessary steps are executed one after the other upon pressing the "Initial commissioning" button.

- Step 1 ▶ Defining holidays (only in the expert mode)
Defining the relevant holidays, the national public holidays in Germany are entered upon pressing the "Customary holidays" button.
- Step 2 ▶ Defining weekly schedule (only in the expert mode)
Weekly schedules are authorisation profiles, which define the days and times when a key is authorised to open a door. They can be created here.
- Step 3 ▶ Defining the number of locks / keys
Number of the locks and keys in the locking system, battery and dismantling key are not included in the number of keys!

Step 4 ▶ Labelling the locks

Labelling the locks to make identification easier (for example apartment door, office,...).

The default value can be retained if the locks should not be labelled at this point of time. The labels can be defined or changed later.

Step 5 ▶ Labelling the keys

Labelling the keys to make identification easier (for example names of persons).

The default value can be retained if the keys should not be labelled at this point of time. The labels can be defined or changed later.

Step 6 ▶ USB stick settings

See "Wireless stick/programming station" tab

This step is carried out only if a connection is not possible to a wireless stick.

Step 7 ▶ Programming all the locks

The lock selected in the management software is programmed by pressing the "Program" button, after bringing it into the programming mode using the service key.

The programming of the selected lock can be reversed by pressing the "Undo programming" button.



For new locks straight from the factory, the service key has to be programmed first.

Step 8 ▶ Programming the battery key

The battery key is programmed into the Keyng1 management software by pressing the "Program" button.

The programming of the battery key can be reversed by pressing the "Undo programming" button.

Step 9 ▶ Programming the dismantling key

The dismantling key is programmed into the Keyng1 management software by pressing the "Program" button.

The programming of the dismantling key can be reversed by pressing the "Undo programming" button.

Step 10 ▶ Programming the key

The key selected in the management software is programmed by pressing the "Program" button. To do this, the key information is read by a lock and sent via wireless to the Keyng1 management software.

The programming of the selected key can be reversed by pressing the "Undo programming" button.

Step 11 ► Setting the authorisations for keys/locks

Which keys work for which locks are defined here.



The table entries in grey indicate keys that have not yet been programmed into the Keyng1 management software or are blocked.

Mode:	Description
Normal	By double-clicking on the table entry, the authorisation for the combination of lock/key, is set or removed depending on the previous status. By selecting a range, several authorisations can be set or removed simultaneously via the context menu.
Expert	In the expert mode, the buttons "1" ... "15" and "Toggle" are additionally displayed (depending on the weekly schedules that have been created). The respective weekly schedule is set as the authorisation profile for the selected lock/key combination using the "1" ... "15" buttons. The "Toggle" button assigns a toggle authorisation (permanent engagement) for the selected table entry. The authorisations for the selected table entry are removed using the "---" button.

Step 12 ► Writing the authorisations

In this step, the previously defined authorisations are now written to the locks.

To do so, any lock which is in the list, is put into the programming mode. Authorisations defined in the previous steps are written to the lock by pressing the "Write" button. As soon as the authorisations are written to the lock, it disappears from the list.

Once all the authorisations are successfully written to the locks, a success message is displayed and the initial commissioning is completed.

4.3 Existing system

An existing locking system, which has been previously operated without the Keyng1 management software, can be imported with all the existing authorisations into the Keyng1 management software by pressing the "Existing system" button.

Step 3 is required only in case a connection is not available to a wireless stick or programming station.

Step 1 ▶ Number of locks

Details of the number of locks present in the locking system.

Step 2 ▶ Labelling the locks

Labelling the locks to make identification easier (for example apartment door, office,...).

The default value can be retained if the locks should not be labelled at this point of time. The labels can be defined or changed later.

Step 3 ▶ Wireless stick settings

See "Wireless stick/programming station" tab

This step is carried out only if a connection is not possible to a wireless stick.

Step 4 ▶ Programming all the locks

The lock selected in the management software is programmed by pressing the "Program" button, after bringing it into the programming mode using the service key.

The programming of the selected lock can be reversed by pressing the "Undo programming" button.

Step 5 ▶ Labelling the keys

Labelling the keys to make identification easier (for example names of persons).

The key held up is read by pressing the "Identify key" button. If the key is in the list, then the row is highlighted.

5 Extension

5.1 Extension

An existing locking system operated using the Keyng1 management software can be extended to include other locks and keys by pressing the "Extension" button.

Step 4 is required only in case a connection is not available to a wireless stick or programming station.

- Step 1 ▶ Defining the number of new locks / keys
The number of locks and keys to be programmed, the total number of locks and keys created is displayed on the right.
- Step 2 ▶ Labelling the locks
Labelling the locks to make identification easier (for example apartment door, office,...). All the locks can be edited using the radio button "All", the newly-created locks can be edited using the "New" radio button.
- Step 3 ▶ Labelling the keys
Labelling the keys to make identification easier (for example names of persons). All the keys can be edited using the radio button "All", the newly-created keys can be edited using the "New" radio button.
- Step 4 ▶ USB stick settings
See "Wireless stick/programming station" tab
This step is carried out only if a connection is not possible to a wireless stick.
- Step 5 ▶ Programming all the locks
The lock selected in the management software is programmed by pressing the "Program" button, after bring it to the programming mode using the service key. The programming of the selected lock can be reversed by pressing the "Undo programming" button.
- Step 6 ▶ Programming the battery key
The battery key is programmed into the Keyng1 management software by pressing the "Program" button.
The programming of the battery key can be reversed by pressing the "Undo programming" button.
- Step 7 ▶ Programming the dismantling key
The dismantling key is programmed into the Keyng1 management software by pressing the "Program" button.
The programming of the dismantling key can be reversed by pressing the "Undo programming" button.
- Step 8 ▶ Programming the key
The key selected in the management software is programmed by pressing the "Program" button. To do this, the key information is read by a lock and sent via wireless to the Keyng1 management software.
The programming of the selected key can be reversed by pressing the "Undo programming" button.
- Step 9 ▶ Setting the authorisations for keys/locks
Which keys work for which locks are defined here.



The column / row name highlighted in blue indicates new locks/keys, table entries in grey indicate keys that have not yet been programmed into the Keyng1 management software or are blocked.

Mode:	Description
Normal	<p>By double-clicking on the table entry, the authorisation for the combination of lock/key, is set or removed depending on the previous status.</p> <p>By selecting a range, several authorisations can be set or removed simultaneously via the context menu.</p>
Expert	<p>In the expert mode, the buttons "1" ... "15" and "Toggle" are additionally displayed (depending on the weekly schedules that have been created).</p> <p>The respective weekly schedule is set as the authorisation profile for the selected lock/key combination using the "1" ... "15" buttons.</p> <p>The "Toggle" button assigns a toggle authorisation (permanent engagement) for the selected table entry.</p> <p>The authorisations for the selected table entry are removed using the "---" button.</p>

Step 10 ► Writing the authorisations

In this step, the previously defined authorisations are now written to the locks.

To do so, any lock which is in the list is put into the programming mode. Authorisations defined in the previous steps are written to the lock by pressing the "Write" button. As soon as the authorisations are written to the lock, it disappears from the list.

Once all the authorisations are successfully written to the locks, a success message is displayed and the initial commissioning is completed.

6 Management

6.1 Changing access rights

Step 1 ► Setting the authorisations for keys/locks

Which keys work for which locks are defined here.



The table entries in grey indicate keys that have not yet been programmed into the Keyng1 management software or they are blocked.

Mode:	Description
Normal	By double-clicking on the table entry, the authorisation for the combination of lock/key, is set or removed depending on the previous status. By selecting an range, several authorisations can be set or removed simultaneously via the context menu.
Expert	In the expert mode, the buttons "1" ... "15" and "Toggle" are additionally displayed (depending on the weekly schedules that have been created). The respective weekly schedule is set as the authorisation profile for the selected lock/key combination using the "1" ... "15" buttons. The "Toggle" button assigns a toggle authorisation (permanent engagement) for the selected table entry. The authorisations for the selected table entry are removed using the "---" button.

Step 2 ► Writing the authorisations

In this step, the previously defined authorisations are now written to the locks.

To do so, any lock which is in the list, is put into the programming mode. Authorisations defined in the previous steps are written to the lock by pressing the "Write" button. As soon as the authorisations are written to the lock, it disappears from the list.

Once all the authorisations are successfully written to the locks, a success message is displayed and the initial commissioning is completed.

6.2 Locks

The master data of the locks can be checked and changed here.

6.3 Key

The master data of the key or users can be checked and changed here.

6.4 Lost/found key

Lost keys can be disabled and keys which have been found again can be enabled here.

Step 1 ▶ Lost / found keys:

The currently selected key is disabled using the "Disable key" button.

Disabled keys can be enabled again using the "Enable key" button.

The key held up is read using the "Read key" button.

Step 2 ▶ Writing authorisations:

the information of the previously authorised key are written to the selected lock using the "Write" button.

All the locks are displayed using the "All" radio button.

With the "Changed" radio button, only the locks where the authorisation still needs to be written are displayed.

The lock held up is read using the "Read lock" button.

6.5 Events

To read events, the lock to be read is put in programming mode and the event reading is started by pressing the "Read" button.

All the events are cleared from the table using the "Clear all" button, but not from the locks.

The service functions can be used to prevent events from being stored in the locks.

6.6 Holidays / weekly schedules (only in expert mode)

Holidays and weekly schedules can be created or changed here.

Step 1 ▶ Defining holidays

Defining the relevant holidays, the national public holidays in Germany are entered upon pressing the "Customary holidays" button.

Step 2 ▶ Defining weekly schedules

Weekly schedules are authorisation profiles, which define the days and times when a key is authorised to open a door. They can be created here.

Step 3 ▶ Writing the authorisations

The information defined or changed previously are written to the selected lock using the "Write" button.

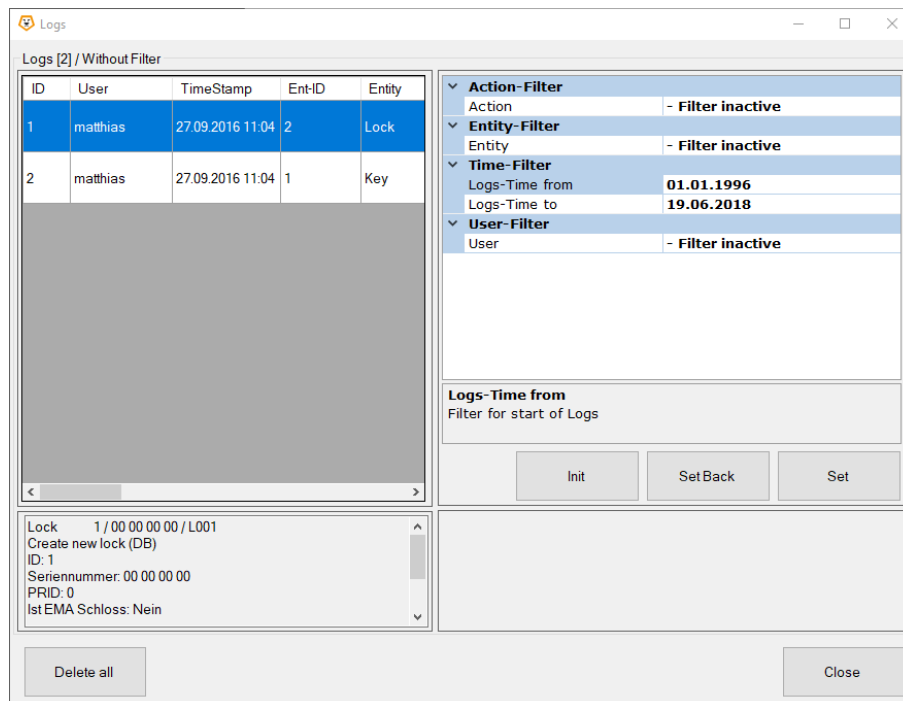
All the locks are displayed using the "All" radio button.

With the "Changed" radio button, only the locks where the authorisation still needs to be written, are displayed.

The lock held up is read using the "Read lock" button.

7 Log

The window displaying the log details is divided into 3 sections. The program window shows the details of all the activities of the users within the Keyng1 management software.



- Logs

All the user activities that have been logged since the installation of the Keyng1 management software are shown in this tabular window.

- Summary log

Important information of the selected log event are summarised and shown in the summary window below it.

- Filter

The display of desired events can be limited using this filter.

To do this, first set the filter and then press the "Apply" button to display the filtered events. Click on the "Reset" button to display all events again.

All the filter criteria can be reset using the "Initialise" button.

8 "Service" menu

8.1 "Service-opening" tab

- Service opening
Allows the electronic locking unit to be opened using the service key.
- Status change
Changes the coupling status of a locking unit from continuously-closed to continuously-open or vice versa.
- Battery replacement
Allows the cover lock to be opened using the service key so that it can be removed and the batteries can be replaced.
- Dismantling
Allows the knob module to be dismantled from the cylinder housing using the service key.

8.2 "Time" tab

The current time of the locking units can be read using the "Read" button.
The current time can be written to the locking unit using the "Set" button.

8.3 "Event log" tab

The event log in the locking unit is enabled using the "Enable" button.
The event log in the locking unit is disabled using the "Disable" button.
The event log can be disabled permanently in the locking unit and cannot be enabled again using the "Disable permanently" button.
The current logging status of the locking unit is read using the "Read" button.

8.4 "Locking time" tab

Allows you to set the locking time (engaged time) in steps of 1 to 15, where the value of 15 roughly corresponds to a duration of 15 seconds.

8.5 "WoR mode" tab

The WoR mode (wake-on-radio) makes it possible to set the radio response of a door electronics.

The following settings are possible:

Mode	Description
0	Wireless is disabled. (Default setting)
1	Wireless communication is disabled. The knob electronics sends only minimum basic information.
2	General wireless requests are rejected, the door electronics responds through wireless only to specific wireless communication.
3	The door electronics responds to general wireless communication, e.g. to an active transponder.

8.6 "Wake-up Sens." tab

8.6.1 Rotation wake-up sensitivity

The rotation wake-up sensitivity is used to set the wake-up sensitivity of an electronic door lock by turning the knob module.

The default setting is "0". By increasing the setting, for example to "2", several turns of the knob are needed to wake up the knob electronics.

8.6.2 Key wake-up sensitivity

This key wake-up sensitivity is used to adjust the sensitivity of the automatic wake-up unit, which should register that a transponder is approaching and wake-up the main electronics. Here, "0" is the most sensitive, "6" is default, and "14" is the least sensitive value that can be configured.



The default value of 6 should not be changed as far as possible since it can reduce the battery life.

8.7 „Security“ tab (only expert mode)

Depending on the selected mode, the electronic door lock checks and/or writes the security authentication to the keys.

Possible settings:

Mode	Description
0	Additional security is not activated.
1	Activated security. Electronic lock tries to write the authentication to the key. Keys, that are not writable, will still work.
2	Electronic lock tries to write the authentication to the key. Keys, that are not writable, will cease to work. (default setting)
3	Forced security. Electronic lock will not write the authentication to the key. The authentication has to be already on the key.

8.8 "FW Update" tab

The firmware file path can be specified here. There is a "..." button behind the path using which the "Search folder dialog" can be opened and a folder from the file system can be defined, which contains the firmware files.

After defining the firmware file path, the firmware files should be imported using the "Import FW file" button. The firmware update can then be started using the "FW update" button.

8.9 „Remote maintenance“ tab

A remote maintenance session can be started by pressing the "Start" button. Before that an up-to-date version of the maintenance software should be downloaded by pressing the button „Download“.