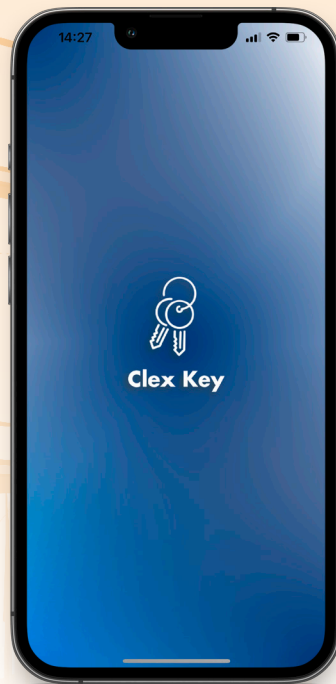


Uhlmann & Zacher

CLEX PRIVATE MOBILE



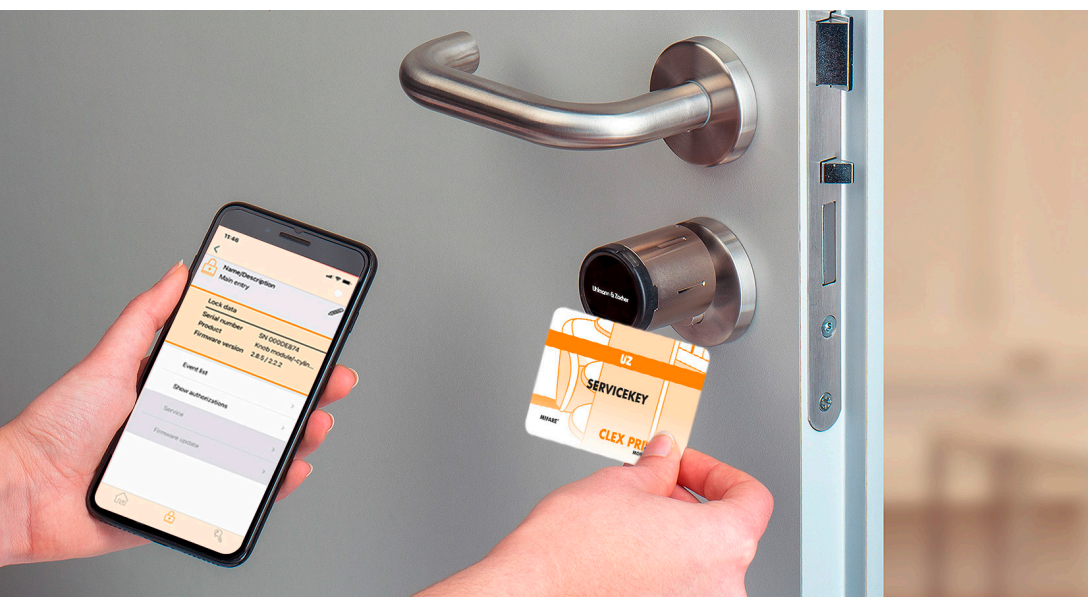
*Smart access control for small
and medium-sized buildings*

Uhlmann & Zacher has been established in the electronic locking system market since 1996. With numerous patented product developments and system enhancements, Uhlmann & Zacher has set new benchmarks in the field of transponder technology-based locking systems. The company focuses on open and integrable solutions as early as the development stage.

Mobile, flexible, secure: Access via smartphone

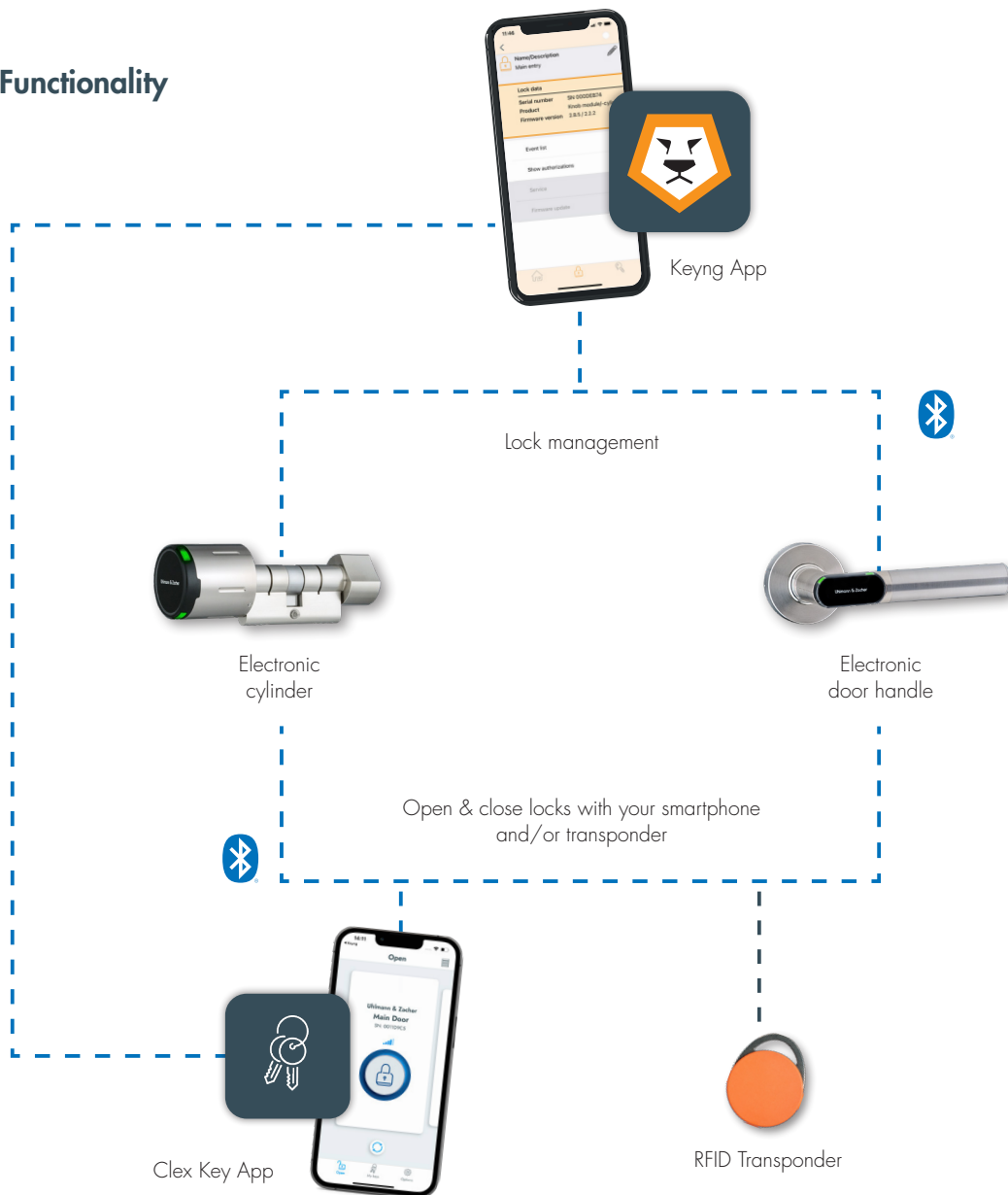
With **Clex private mobile**, users can manage their electronic locking units (electronic door handle, electronic locking cylinder) as well as open and close them. In the process, the smartphone communicates with the locking units via **Bluetooth® Low Energy**.

Alternatively, opening and closing is also possible using RFID transponder. Clex private mobile is particularly suitable for small to medium-sized buildings such as doctors' clinics, law firms, small offices or private homes.





Functionality



Mobile access made easy: Our system speaks for itself



High security standards

To ensure the security requirements, invitations are sent in two ways. Only once both invitation parts are confirmed, can the keys be used to open locking units via smartphone.



Mobile administration with the smartphone

Thanks to the Keyng App, it is possible to manage the Clex private locking units easily with a smartphone.



Stand alone System

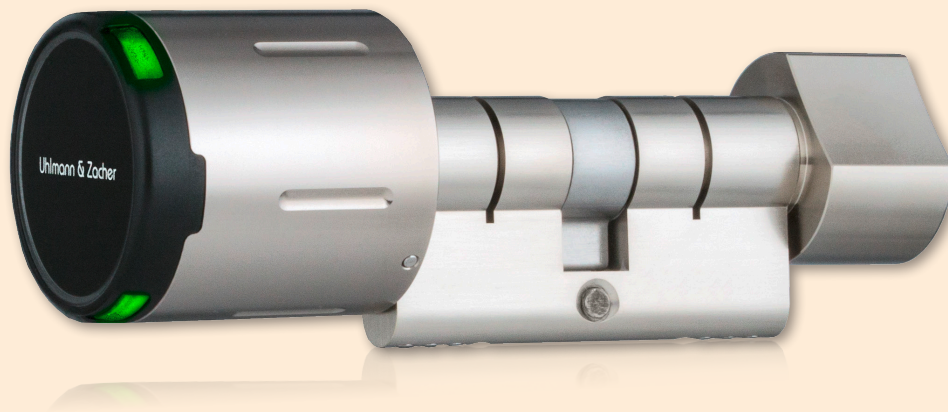
The Clex private mobile system works offline. Unlike online systems, Clex private mobile users are not dependent on an internet connection to open doors.



Allocation of authorisations with a limited period of validity

With the help of the Clex Key App, access rights can be flexibly assigned and adjusted. It is also possible to assign authorisations with limited validity. This is interesting, for example, for holiday guests who should only have access for a few days.





Mobile management of locking units

The locking system can be managed easily using the **Keyng App**. The smart navigation guides the user through the app and always provides a clear overview of all the transponders and smartphones.

With the help of the app, it is possible to establish a secure connection with the lock in order to change authorisations, learn new keys or make settings on the respective lock. Keys can easily be added to or removed from the lock without the key or key holder having to be within reach.

Prerequisite for communication with the smartphone are **Bluetooth®-enabled locking units**. To protect from unauthorised copies of transponders, an encrypted **Secure ID** is written to compatible transponders.

Functions such as **disassembly, battery change or service opening** are also possible in the app.

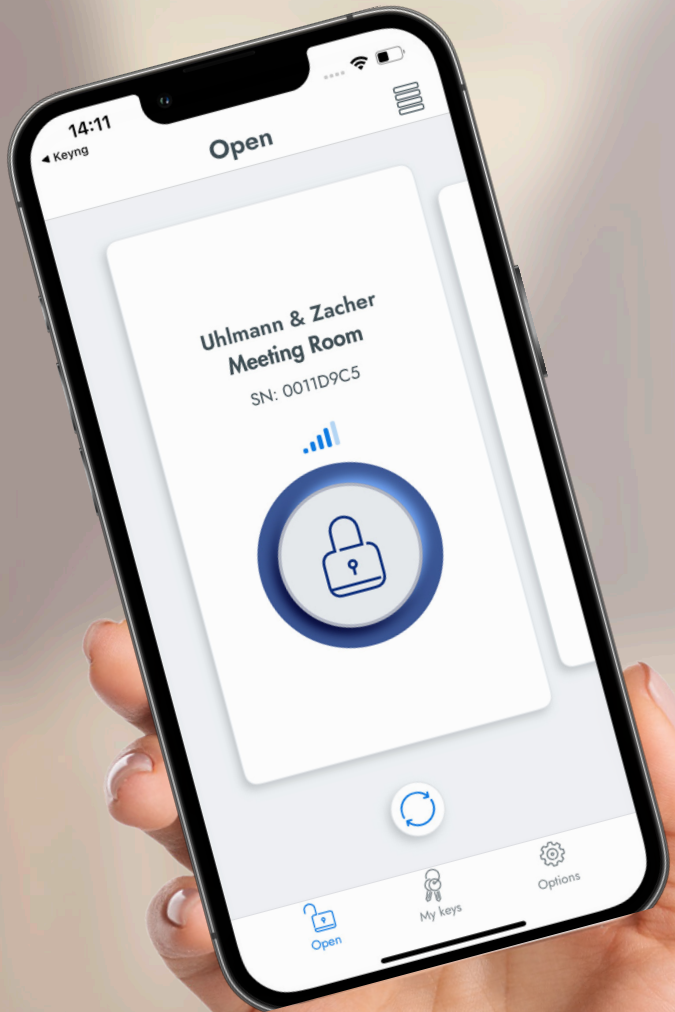


Mobile opening and closing of locking units

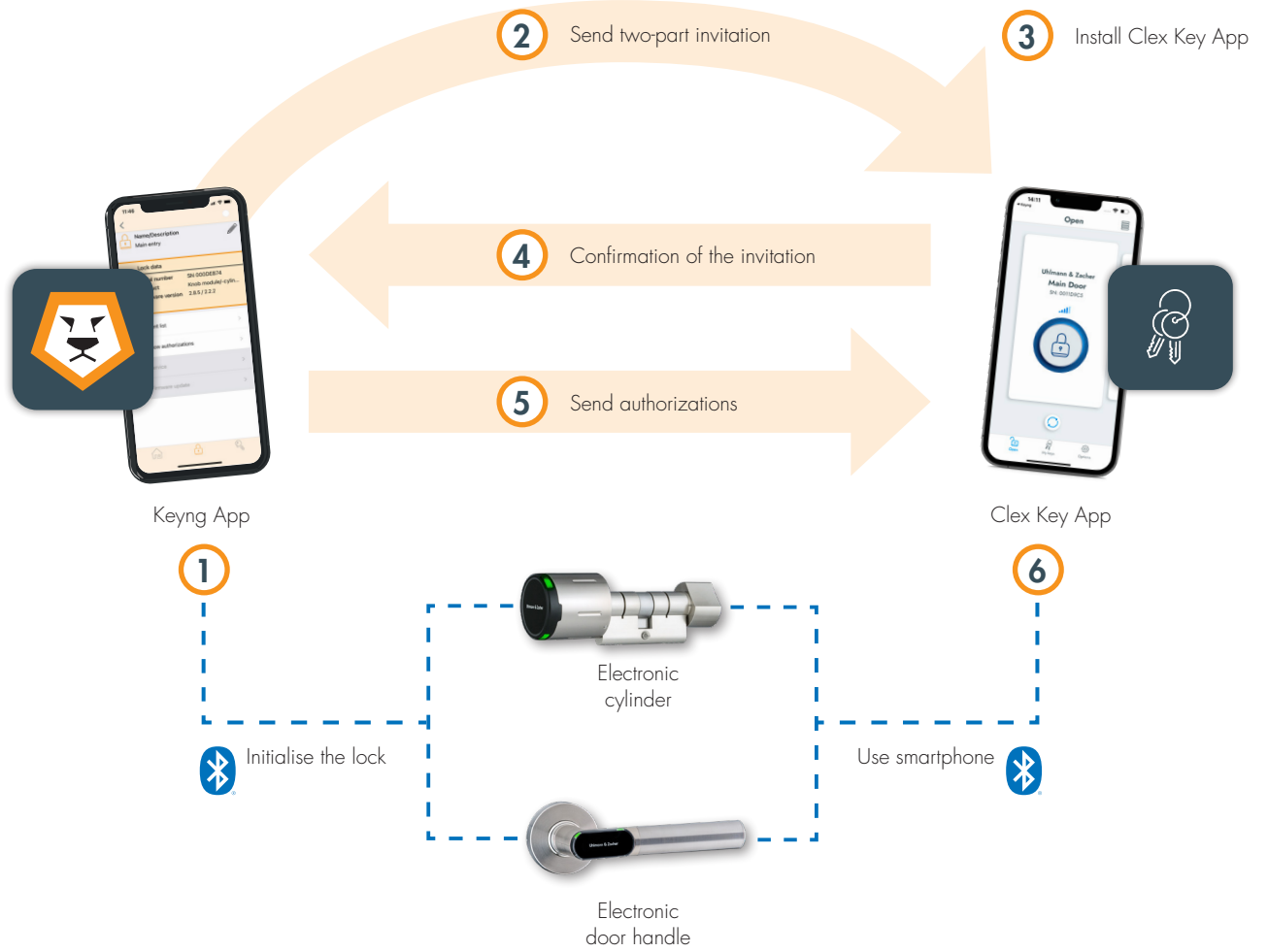
With the **Clex Key App**, the electronic locking units can be opened and closed using the smartphone. Thereby the smartphone does not have to be connected to the internet while opening the door. This makes it easy to open even remote doors in underground garages or basements. This is possible with the smartphone as well as in parallel with RFID transponders.

Download apps here:





Grant mobile access



 Bluetooth® Low Energy

1 Keyng App

With the help of the Keyng App, the electronic locking units can be managed using a smart phone.

2 Send two-part invitation

For security reasons, a two-part invitation is sent by e-mail and text message. The messages contain text-based codes as links (in preparation: optional QR code).

3 Install Clex Key App

Afterwards the Clex Key App must be installed. This app enables the opening and closing of the units.

4 Confirmation of the invitation

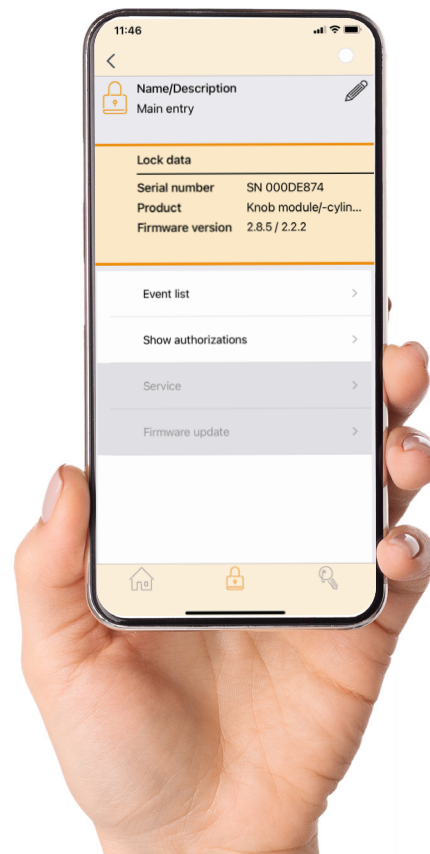
The invitations must be confirmed.

5 Send authorizations

After successful confirmation of the invitation, any permissions can be assigned, also with time limits.

6 Clex Key App

With the Clex Key App, the electronic locking units can be opened and closed using the smart phone.

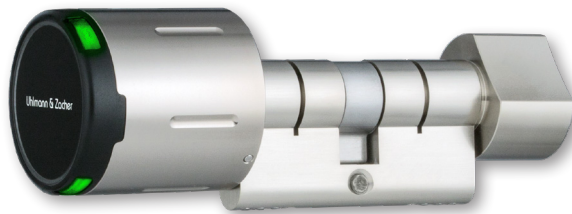


Our locking units

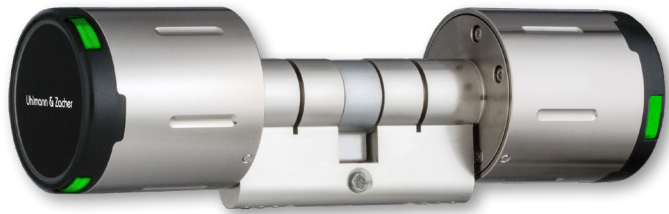
Electronic knob cylinder

The electronic knob cylinder impresses with its **modular design**, as this allows individual components (cylinder housing, knobs) to be flexibly exchanged and adapted to the respective installation situation and individual requirements.

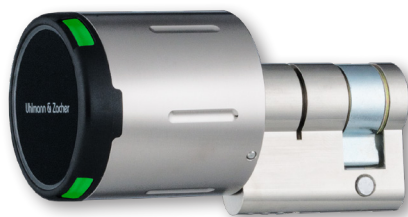
CX2122
Electronic
knob cylinder



CX2124
Electronic
double-knob cylinder



CX2126
Electronic
half cylinder



CX2172

Electronic door handle with electronic access right on one side with round and oval rose.



CX2174

Electronic door fitting with electronic access right on on side in narrow, with short plate and wide.



Electronic door handle / electronic door fitting

Thanks to the different versions, the electronic door handle and electronic door fitting can be used in all common doors such as wooden, steel and aluminium as well as narrow frame doors from a backset of 20 mm. The entire electronics, mechanics, LED signaling and power supply are completely installed in the door handle.



Uhlmann & Zacher