

Uhlmann & Zacher

CLEX PUBLIC

U²Z



*Flexible integrated locking
and security management*



UZ

Clex public online

With Clex public online it is possible to integrate doors in access control systems in a cost-efficient way. Clex public online defines an interface for a connection between "Master" (e.g. Access Control System) and "Slave" (e.g. Radio Switching Module CX8932). Clex prime, Clex private and Clex public locking units may be integrated.

Functionality

The user holds the ID in front of the electronic locking unit.

The locking unit reads the ID number and sends it to the online module, which in turn passes this information via the interface to the access control system. If the access control system recognizes the ID, the locking unit engages.

RS485 Interface or LAN

The online module works like a "gateway" that sends the relevant commands from the online bus to the wireless network of the locking units and vice versa. This makes it possible to integrate electronic knob cylinders, door handles/door fittings and cabinet locks into an online access network without using cables. Up to 16 locking units may be connected to one RS485 BUS respectively Online Module LAN (depending on the wireless connection range).

Wiegand/Clock-Data Interface

The Wiegand/Clock-Data interface can transfer the read ID numbers to the access control. A 1:1 connection exists between the electronic locking units and the access control.

OSDP

OSDP is an open, universal protocol for readers and other access system components. It is flexible and comes with enhanced security.



Clex public offline

Clex public offline is an off-the-shelf firmware, modifiable by the partner in the most flexible way. A default selection of important parameters, e.g. card number or time parameter for the transponder, is provided. Customer requirements and further customisation are implemented by choosing from the rich parameter set – this way, customers can create bespoke products efficiently.

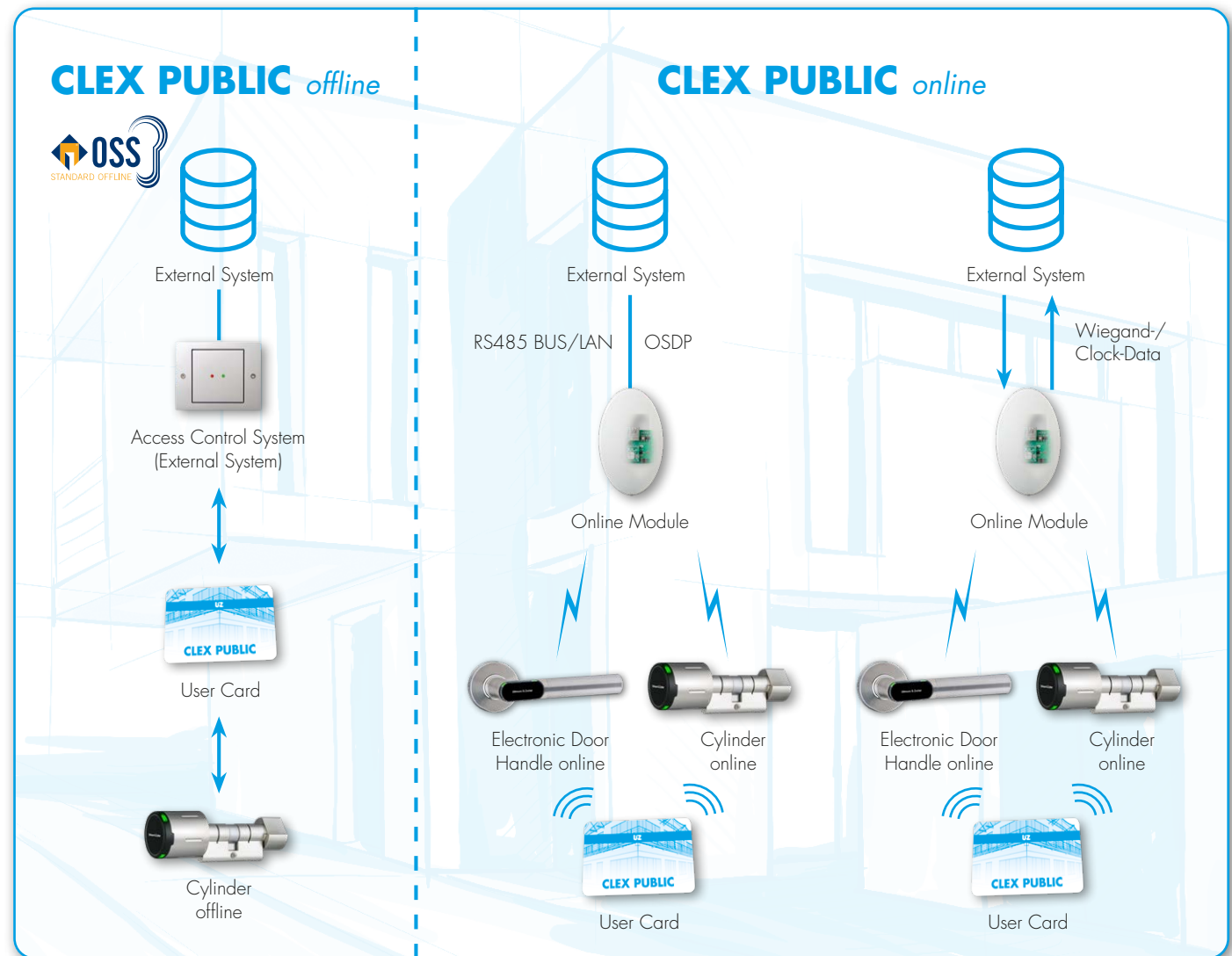
By modifying the parameters, the Clex public offline system can be tailored to the customer's specification, even allowing integration in existing systems. Parameters are available not only to describe functions and model behaviour of the locking unit, but also for the structure and layout of data on the transponder.

Clex public provides the partner with a custom firmware for Clex locking units without the need for developing a firmware themselves.

Another offline version is OSS Standard Offline. OSS Standard Offline represents a uniform standard solution.

Available parameters (examples):

- Card number
- Version number
- Time parameter for the transponder
- Access right by group
- Access right by single doors
- Access right by extra group
- Access right by profile
- Validation time
- Log file on transponder



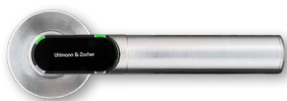


Examples from our product range:



CX8122

Double-knob cylinder with electronic authorisation on one side, as CX8124 also available with electronic authorisation on both sides



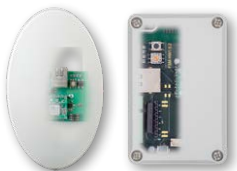
CX8172

Electronic Door Handle with electronic authorisation



CX8932

Radio Switching Module for the control of the electronic locking units



CX8942

Online Module LAN for the control of the electronic locking units